

**the
TASMAN
TANK CO.**

DESIGN ■ FABRICATE ■ CONSTRUCT

Fire Hydrant and Fire Sprinkler storage tanks are Tasman's 'stock-n-trade'. Tasman design, manufacture and install 10-20 fire tanks per month around Australia, New Zealand and the Pacific Islands. Tasman are a member of both the National Fire Industry Association (NFIA) and the Fire Protection Association of NZ (FPA). Our technical sales team are often requested to present to industry groups including 'Standards' and the Hydraulic Association – Tasman are at the forefront of the industry.

Union site?

No problems - Tasman have certified Union EBA's in place.

Limited on space?

Talk to one of Tasman's technical sales team.

We custom engineer a fit-for-purpose storage solution to meet your requirements.

The Tasman Tank Co. is pleased to present our comprehensive range of liquid storage solutions for the Fire Protection Industry. Our specialised tanks for your industry are:

Series TS600
Circular Bolted Galvanised Liner Tank

Series TS700
Circular Bolted Galvanised Steel Floor Tank

Series TS185
Rectangular Bolted Stainless Steel Modular Tank

Series TS200
Rectangular Bolted Galvanised Modular Tank

All Tasman Fire Water Tanks are "AS2304" designed, constructed and compliant.

Head Office Australia:

Postal: Locked Bag 1005 Plumpton NSW 2761 Australia | Free Call: 1800 826 526 | E: sales@tasmantanks.com.au
151 Glendenning Road Glendenning NSW 2761 | Website: www.tasmantanks.com.au

New Zealand Offices:

Postal: PO Box 10-000 Phillipstown Christchurch 8145 New Zealand | Free Call: 0800 826 526 | E: salesnz@tasmantanks.co.nz
Unit A, 81 Byron Street Sydenham Christchurch | Website: www.tasmantanks.co.nz
125 Norton Road Frankton Hamilton

TS600 CIRCULAR LINER TANK

The TS600 Circular tank is a bolted steel design incorporating an internal membrane liner to provide the water containment. The tanks are constructed on site, by our trained construction crews, using our hydraulic jacking system.



Specification options available include:

- Wall sheet material – Galvabond, hot dip galvanised steel or stainless steel.
- Internal membrane liner: PVC, Aeon, Butyl Rubber, Polypropylene and Polyethylene.
- Standard mono-clad roof structure and sheeting or long-life ZAM structure and Ultra sheeting. Aluminium also available. All roofs are designed to AS/NZS1170.2.
- All tank suction outlets are provided with vortex plates with grilles to bond the liner in place and prevent disruption to pump flow.
- Access ladders or stairways are supplied on all tanks. Ladders conform with AS1657. Side entry manholes can also be supplied.
- To meet environmental and aesthetic requirements we can custom the external finish to suit. There is a huge palette of colours available for powder coating walls and the full Colorbond range is available for roof sheeting.
- The TS600 tank can also be insulated to prevent freezing in cold environments.

TS700 CIRCULAR BOLTED NON-LINER TANK

Designed, fabricated and constructed with the same stringent standards as the TS600, however no internal containment liner is used. This tank incorporates a fully bolted floor and wall system.

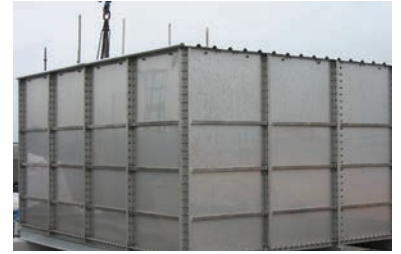


The TS700 model maintains its water seal using PVC foam gasket, polyurethane flexible sealant and Tasman's industry leading bolt seal.

- Wall sheet material – Galvabond, hot dip galvanised steel or stainless steel.
- Standard galvanised roof structure and zincalume sheeting or long-life ZAM structure and Ultra Sheeting. Aluminium sheeting also available. All roofs are designed to AS/NZS1170.2
- Tank overflow drain inlets and outlets sizes to AS/NZS3500 requirements.
- Access ladders or stairways are supplied on all tanks. Ladders conform with AS1657. Side entry manholes can also be supplied.

TS185 RECTANGULAR STAINLESS STEEL TANK

The TS185 is a bolted stainless steel rectangular tank. Panels are manufactured with square corners and a panel stiffening system that provides support to the mid flange section of the panel. The thickness of the tank panel is increased as internal pressures dictate. The internal bracing support system is fastened and sealed at all intersecting panel joints. Foundation requirements vary depending on the height, area and site plan position. Tank component and water loading can be calculated at the time of consultation allowing determination of the foundation requirements by others.



TS185 tanks can be constructed either with flat sheet floor on a level concrete foundation or panel base placed on to steel beams and concrete or steel plinths.

- Tank walls and floor manufactured from stainless steel material.
- Self-supporting roof support structure and vermin proof cover, available in either stainless steel or galvanised.
- Galvanised inlet bracket, inlet housing and lockable manhole.
- Tanks can be designed to incorporate compartments or weirs within the configuration to better execute the process.
- Stainless Steel internal and external access ladders designed and manufactured to AS1657.

Tasman specialises in non standard tank configurations including building around columns, L-shaped, tanks built on sloping sites.

TS200 RECTANGULAR GALVANISED TANK

The TS200 galvanised rectangular tank is manufactured and constructed with the same precision design and engineering as the TS185 stainless steel rectangular tank. The significant difference is all stainless components are substituted with either galvabond or hot-dip galvanised steel.



OUR FIRE PROTECTION INDUSTRY TANK RANGE COMPLIES WHERE APPROPRIATE WITH AS/NZS3500, AS2118, AS2419, NZS4541, AS1657, AS/NZ1170 (SET) AS2304



The Tasman Tank Co. is a member of the National Fire Industry Association Australia and the Fire Protection Association NZ